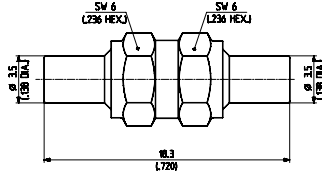


ADAPTORS WITHIN SERIES

MMCX	H+S type Item no.	31_MMCX-50-0-1/111_OE 22645960
-------------	------------------------------	---

jack/jack (f)

Packaging single
Material: brass/gold

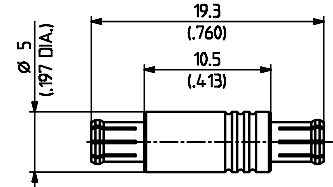


VSWR: DC - 3 GHz: ≤ 1.10
3 - 6 GHz: ≤ 1.28

MCX 50Ω	H+S type Item no.	32_MCX-50-0-3/111_NE 22653002
----------------	------------------------------	--

plug/plug (m)

Packaging single
Material: brass/gold

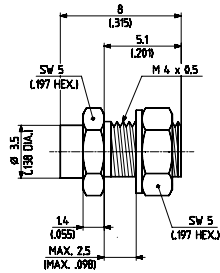


VSWR DC - 1.5 GHz: ≤ 1.06
1.5 - 6 GHz: ≤ 1.22

MMCX	H+S type Item no.	34_MMCX-50-0-1/111_OE 22650516
-------------	------------------------------	---

jack/jack (f)

Packaging single
Material: brass/gold
Mounting hole ML 88

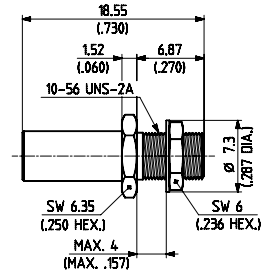


VSWR DC - 1.5 GHz: ≤ 1.06
1.5 - 6 GHz: ≤ 1.22

MCX 50Ω	H+S type Item no.	34_MCX-50-0-2/111_NE 22649868
----------------	------------------------------	--

jack/jack (f)

Packaging single
Material: brass/gold
Mounting hole ML 89

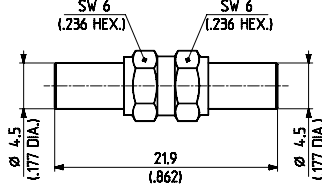


VSWR DC - 1.5 GHz: ≤ 1.06
1.5 - 6 GHz: ≤ 1.22

MCX 50Ω	H+S type Item no.	31_MCX-50-0-1/111_NE 22543558
----------------	------------------------------	--

jack/jack (f)

Packaging single
Material: brass/gold

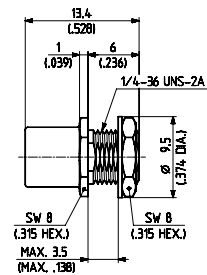


VSWR DC - 1 GHz: ≤ 1.05
1 - 6 GHz: ≤ 1.22

MCX 75Ω	H+S type Item no.	34_MCX-75-0-1/111_NE 22649382
----------------	------------------------------	--

jack/jack (f)

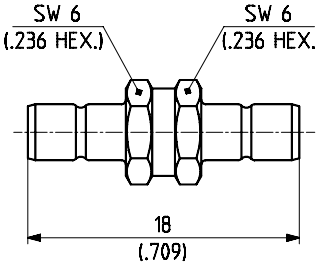
Packaging single
Material: brass/gold
Mounting hole ML 35

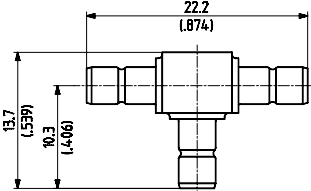


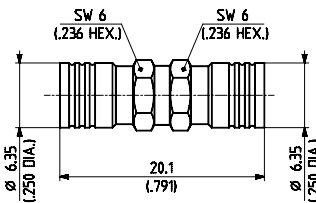
VSWR DC - 1 GHz: ≤ 1.05
1 - 6 GHz: ≤ 1.22

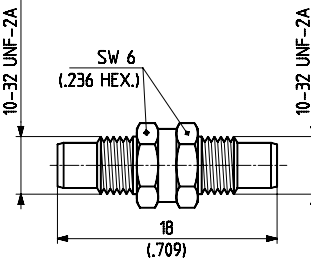
Material and plating descriptions may refer to the connector housing or outer contact.

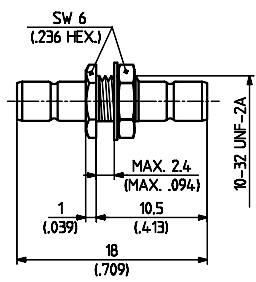
SUCO* = SUCOPLATE®

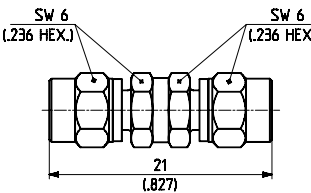
SMB	H+S type Item no.	31_SMB-50-0-1/111_NE 22640221
jack/jack (f)		
Packaging	single	
Material:	brass/gold	
VSWR	DC - 4 GHz	1.03 + 0.08 f

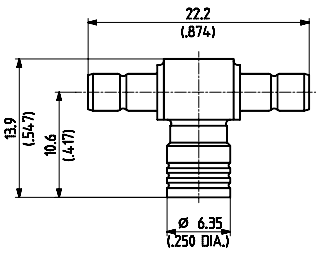
SMB	H+S type Item no.	46_SMB-50-0-2/111_NE 22640228
3 jacks (f)		
Packaging	single	
Material:	brass/gold	
VSWR	DC - 4 GHz	1.03 + 0.08 f

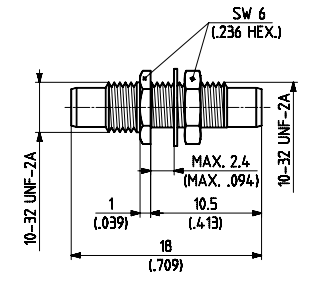
SMB	H+S type Item no.	32_SMB-50-0-1/111_NE 22640222
plug/plug (m)	open entry	
Packaging	single	
Material:	brass/gold	
VSWR	DC - 1.5 GHz	1.5 - 4 GHz ≤ 1.30

SMC	H+S type Item no.	31_SMC-50-0-1/111_NE 22640300
jack/jack (f)		
Packaging	single	
Material:	brass/gold	
VSWR	DC-10 GHz	≤ 1.08 + 0.15 f

SMB	H+S type Item no.	34_SMB-50-0-2/111_NE 22640224
jack/jack (f)		
Packaging	single	
Material:	brass/gold	
Mounting hole	ML 11	
VSWR	DC - 2 GHz	2 - 4 GHz ≤ 1.24

SMC	H+S type Item no.	32_SMC-50-0-1/111_NE 22543822
plug/plug (m)		
Packaging	single	
Material:	brass/gold	
VSWR	DC-10 GHz	≤ 1.08 + 0.10 f

SMB	H+S type Item no.	43_SMB-50-0-2/111_NE 22640226
1 plug (m), 2 jacks (f)	open entry	
Packaging	single	
Material:	brass/gold	
VSWR	DC-10 GHz	≤ 1.03 + 0.08 f

SMC	H+S type Item no.	34_SMC-50-0-2/111_NE 22640302
jack/jack (f)		
Packaging	single	
Material:	brass/gold	
Mounting hole	ML 11	
VSWR	DC-10 GHz	≤ 1.03 + 0.08 f

Material and plating descriptions may refer to the connector housing or outer contact.

SUCO* = SUCOPLATE®

SMC	H+S type Item no.	43_SMC-50-0-2/111_NE 22640305
1 plug (m), 2 jacks (f) Packaging	single	
Material:	brass/gold	

SMA	H+S type Item no.	32_SMA-50-0-1/111_NE 22640151
plug/plug (m)	single	
Packaging	single	
Material:	CuBe/gold	
VSWR	DC-18 GHz	$\leq 1.05 + 0.005 f$

SMC	H+S type Item no.	46_SMC-50-0-2/111_NE 22640307
3 jacks (f)	single	
Packaging	single	
Material:	brass/gold	

SMA	H+S type Item no.	32_SMA-50-0-52/199_NE 22643689
plug/plug (m)	single	
Packaging	single	
Material:	stainless steel	
VSWR	DC-18 GHz	$\leq 1.05 + 0.005 f$

SMA	H+S type Item no.	31_SMA-50-0-1/111_NE 22640150
jack/jack (f)	single	
Packaging	single	
Material:	CuBe/gold	
VSWR	DC-18 GHz	$\leq 1.05 + 0.005 f$

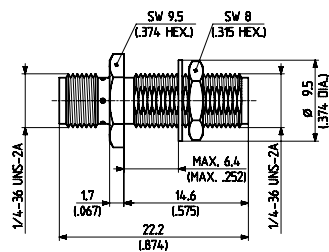
SMA	H+S type Item no.	33_SMA-50-0-1/111_NE 22641119
plug/jack(m/f)	single	
Packaging	single	
Material:	CuBe/gold	
VSWR	DC-18 GHz	$\leq 1.05 + 0.005 f$

SMA	H+S type Item no.	31_SMA-50-0-51/199_NE 22641486
jack/jack (f)	single	
Packaging	single	
Material:	stainless steel	
VSWR	DC-18 GHz	$\leq 1.05 + 0.005 f$

SMA	H+S type Item no.	33_SMA-50-0-51/199_NE 22644253
plug/jack (m/f)	single	
Packaging	single	
Material:	stainless steel	
VSWR	DC-18 GHz	$\leq 1.05 + 0.005 f$

SMA H+S type Item no. **34_SMA-50-0-1/111_NH** 22649842

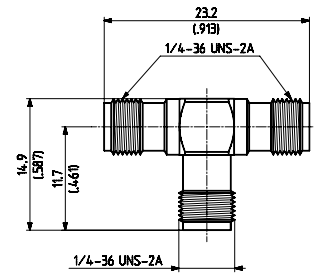
jack/jack (f)
 Packaging bulk 100 pcs.
 Material: CuBe/gold
 Mounting hole ML 35



VSWR DC-18 GHz $\leq 1.05 + 0.005 f$

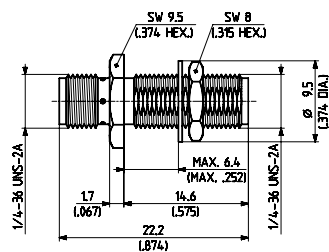
SMA H+S type Item no. **46_SMA-50-0-1/111_NE** 22543357

3 jacks (f)
 Packaging single
 Material: CuBe/gold



SMA H+S type Item no. **34_SMA-50-0-51/199_NE** 22544823

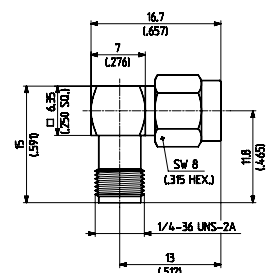
jack/jack (f)
 Packaging single
 Material: stainless steel
 Mounting hole ML 35



VSWR DC-18 GHz $\leq 1.05 + 0.005 f$

SMA H+S type Item no. **53_SMA-50-0-51/199_NE** 22642655

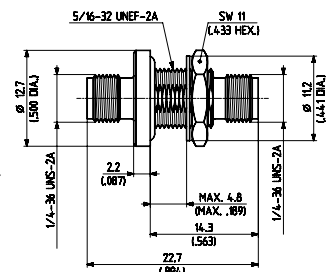
plug/jack (m/f)
 Packaging single
 Material: stainless steel



VSWR DC - 14 GHz $\leq 1.02 + 0.03 f$
 14 - 18 GHz ≤ 1.92

SMA H+S type Item no. **34_SMA-50-0-3/111_NE** 22641297

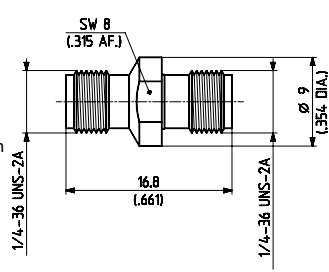
jack/jack (f) hermet. sealed
 Packaging single
 Material: CuBe/gold
 Mounting hole ML 38
 Leak rate 10^{-6} Torr 1/sec.
 RoHS compliant alternative on request



VSWR DC - 3 GHz ≤ 1.1
 3 - 7 GHz ≤ 1.2
 7 - 18 GHz ≤ 1.3

PC3.5 H+S type Item no. **31_PC35-50-0-1/199_UE** 22644360

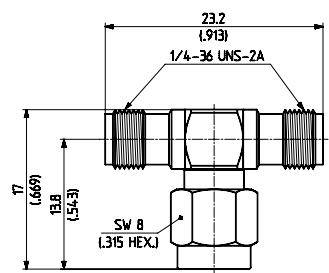
jack/jack (f)
 Packaging single
 Material: stainless steel
 Electrical length 14.1 +/- 0.1 mm



VSWR DC - 18 GHz ≤ 1.08
 18 - 26.5 GHz ≤ 1.15

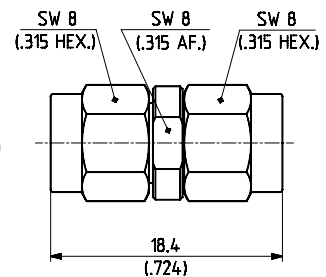
SMA H+S type Item no. **43_SMA-50-0-1/111_NE** 22543356

1 plug (m), 2 jacks (f)
 Packaging single
 Material: CuBe/gold



PC3.5 H+S type Item no. **32_PC35-50-0-1/199_UE** 22644361

plug/plug (m)
 Packaging single
 Material: stainless steel
 Electrical length 14.1 +/- 0.1 mm



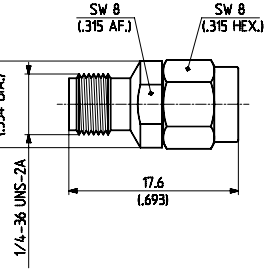
VSWR DC - 18 GHz ≤ 1.08
 18 - 26.5 GHz ≤ 1.15

Material and plating descriptions may refer to the connector housing or outer contact.

SUCO* = SUCOPLATE®

PC3.5 H+S type Item no. 33_PC35-50-0-1/199_UE 22644362

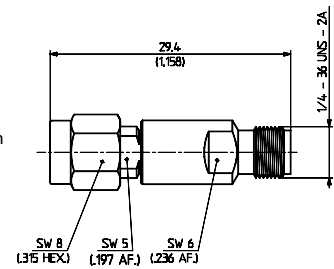
plug/jack (m/f)
 Packaging single
 Material: stainless steel
 Electrical length 14.1 +/- 0.1 mm



VSWR DC - 18 GHz ≤ 1.08 18 - 26.5 GHz ≤ 1.15

PC3.5 H+S type Item no. 33_PC35-50-0-2/199_NE 23020453

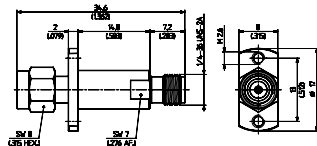
plug/jack(m/f)
 Packaging single
 Material: stainless steel
 Electrical length 25.4 +/- 2.6 mm
 Note Adaptor for QMA calibration



VSWR DC - 1.5 GHz ≤ 1.036 1.5 - 6 ≤ 1.065 6 - 18 GHz ≤ 1.22

PC3.5 H+S type Item no. 39_PC35-50-0-1/199_UE 23003664

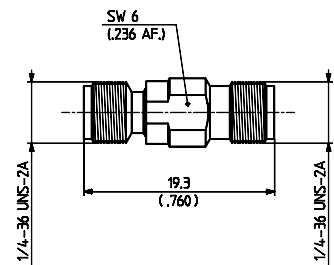
plug/jack (m/f)
 Packaging single
 Material: stainless steel



VSWR DC - 4 GHz ≤ 1.03 4 - 10 ≤ 1.07 10 - 16 ≤ 1.12 16 - 26.5 GHz ≤ 1.22

SK H+S type Item no. 31_SK-50-0-1/199_NE 23004726

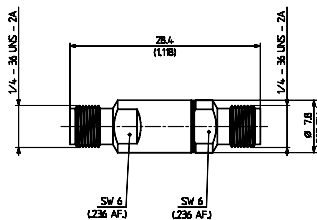
jack/jack (f)
 Packaging single
 Material: stainless steel
 Electrical length 16.1 +/- 0.1 mm



VSWR DC - 40 GHz ≤ 1.20

PC3.5 H+S type Item no. 31_PC35-50-0-2/199_NE 23020456

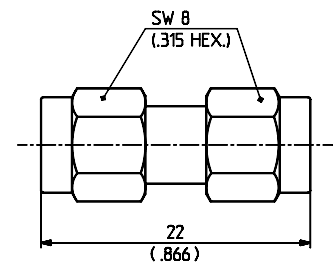
jack/jack (f)
 Packaging single
 Material: stainless steel
 Electrical length 25.4 +/- 2.6 mm
 Note Adaptor for QMA calibration



VSWR DC - 1.5 GHz ≤ 1.036 1.5 - 6 ≤ 1.065 6 - 18 GHz ≤ 1.22

SK H+S type Item no. 32_SK-50-0-1/199_NE 23004727

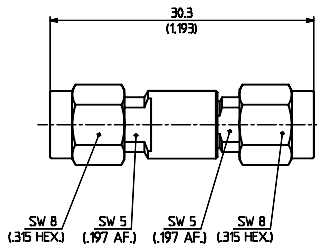
plug/plug (m)
 Packaging single
 Material: stainless steel
 Electrical length 16.1 +/- 0.1 mm



VSWR DC - 40 GHz ≤ 1.20

PC3.5 H+S type Item no. 32_PC35-50-0-2/199_NE 23020457

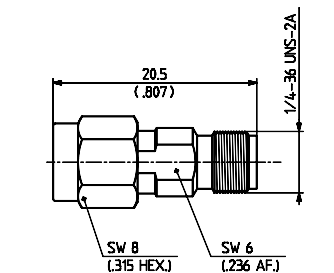
plug/plug (m)
 Packaging single
 Material: stainless steel
 Electrical length 25.4 +/- 2.6 mm
 Note Adaptor for QMA calibration



VSWR DC - 1.5 GHz ≤ 1.036 1.5 - 6 ≤ 1.065 6 - 18 GHz ≤ 1.22

SK H+S type Item no. 33_SK-50-0-1/199_NE 23004728

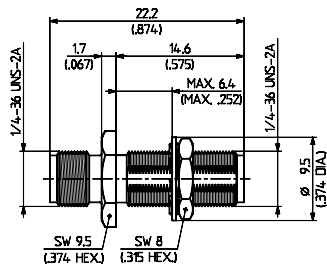
plug/jack (m/f)
 Packaging single
 Material: stainless steel
 Electrical length 16.1 +/- 0.1 mm



VSWR DC - 40 GHz ≤ 1.20

SK H+S type 34_SK-50-0-51/199_NE
Item no. 22658969

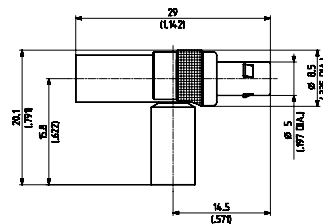
jack/jack (f)
Packaging single
Material: stainless steel
Mounting hole ML 35



VSWR DC - 40 GHz
≤ 1.02 + 0.01

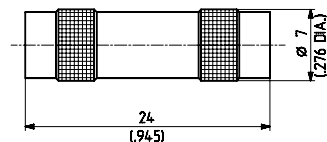
QLA H+S type 45_QLA-01-0-1/112_NE
Item no. 22640033

2 jacks (f)
1 plug (m)
Packaging single
Material: brass/nickel



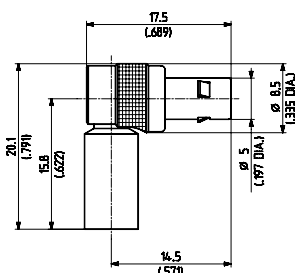
QLA H+S type 31_QLA-01-0-1/112_NE
Item no. 22640028

jack/jack (f)
Packaging single
Material: brass/nickel



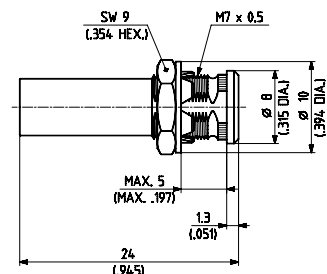
QLA H+S type 53_QLA-01-0-1/112_NE
Item no. 22640034

plug/jack (m/f)
Packaging single
Material: brass/nickel



QLA H+S type 34_QLA-01-0-2/112_NE
Item no. 22640031

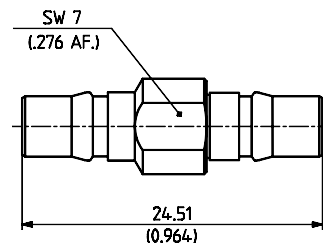
jack/jack (f)
Packaging single
Material: brass/nickel
Mounting hole ML 99



Note ML 99

QMA H+S type 31_QMA-50-0-1/199_NE
Item no. 23023171

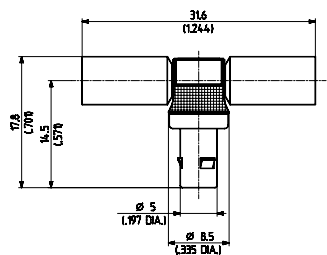
jack/jack (f)
Packaging single
Material: stainless steel



VSWR DC - 1.5 GHz
≤ 1.036 1.5 - 6 GHz
≤ 1.065

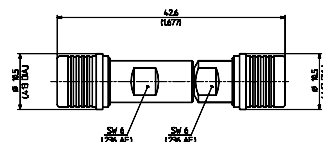
QLA H+S type 43_QLA-01-0-1/112_NE
Item no. 22640032

2 jacks (f)
1 plug (m)
Packaging single
Material: brass/nickel



QMA H+S type 32_QMA-50-0-1/1-NE
Item no. 23023199

plug/plug (m)
Packaging single
Material: stainless steel



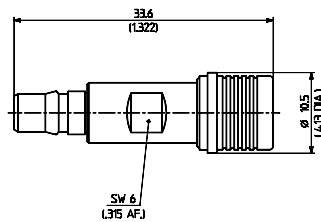
VSWR DC - 1.5 GHz
≤ 1.036 1.5 - 6 GHz
≤ 1.065

QMA H+S type Item no. **33_QMA-50-0-1/1_NE** 23023287

plug/jack (m/f)

Packaging single

Material: stainless steel



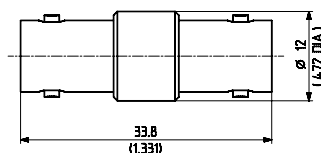
VSWR DC - 1.5 GHz ≤ 1.036 1.5 - 6 GHz ≤ 1.065

BNC 50 Ω H+S type Item no. **31_BNC-50-0-1/133_NE** 22540540

jack/jack (f)

Packaging single

Material: brass/SUCO*



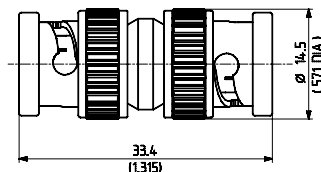
VSWR DC - 4 GHz ≤ 1.06 + 0.04 f

BNC 50 Ω H+S type Item no. **32_BNC-50-0-1/133_NE** 22540565

plug/plug (m)

Packaging single

Material: brass/SUCO*



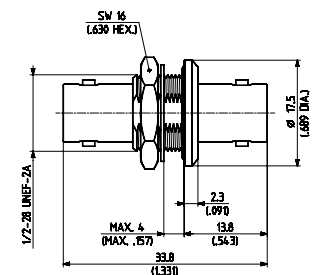
VSWR DC - 4 GHz ≤ 1.06 + 0.04 f

BNC 50 Ω H+S type Item no. **34_BNC-50-0-1/133_NE** 22540627

jack/jack (f)

Packaging single

Material: brass/SUCO*
Mounting hole ML 4



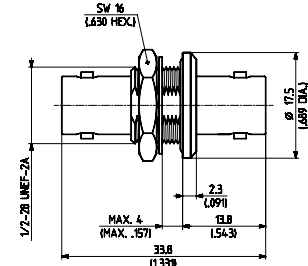
VSWR DC - 1.5 GHz ≤ 1.04 1.5 - 4 GHz ≤ 1.08 + 0.10 f

BNC 50 Ω H+S type Item no. **34_BNC-50-0-1/133_UE** 22652148

jack/jack (f)

Packaging single

Material: brass/SUCO*
Mounting hole ML 4



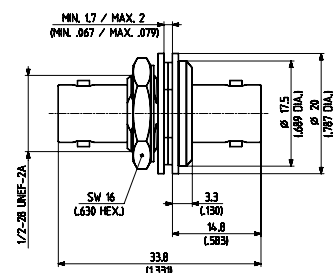
VSWR DC - 1.5 GHz ≤ 1.04 1.5 - 4 GHz ≤ 1.08 + 0.10 f

BNC 50 Ω H+S type Item no. **34_BNC-50-0-2/133_NE** 22540629

jack/jack (f)

for insulated mounting single

Material: brass/SUCO*
Mounting hole ML 22



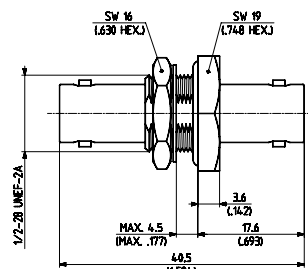
VSWR DC - 1.5 GHz ≤ 1.04 1.5 - 4 GHz ≤ 1.08 + 0.10 f

BNC 50 Ω H+S type Item no. **34_BNC-50-0-6/100_NE** 22540631

jack/jack (f)

hermet.sealed single

Material: CuBe/silver
Mounting hole ML 4
Leak rate 10⁻⁶ Torr 1/sec.
RoHS compliant alternative on request



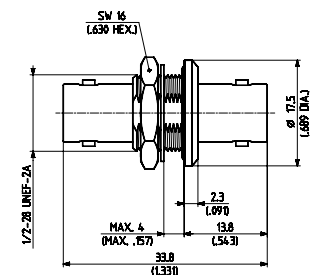
VSWR DC - 4 GHz ≤ 1.90

BNC 50 Ω H+S type Item no. **34_BNC-50-0-1/133_NE** 22540635

jack/jack (f)

Packaging single

Material: brass/SUCO*
Mounting hole ML 10



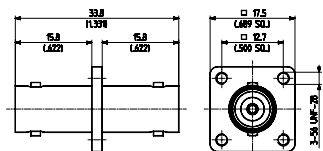
VSWR DC - 4 GHz ≤ 1.06 + 0.04 f

BNC 50 Ω H+S type Item no. **37_BNC-50-0-1/133_NE** 22540635

jack/jack (f)

Packaging single

Material: brass/SUCO*
Mounting hole ML 10



VSWR DC - 4 GHz ≤ 1.06 + 0.04 f

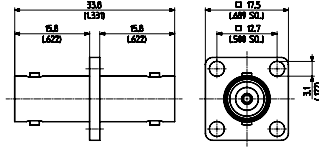
Material and plating descriptions may refer to the connector housing or outer contact.

SUCO* = SUCOPLATE®

BNC 50 Ω H+S type
Item no. 37_BNC-50-0-2/133_NE
22540638

jack/jack (f)

Packaging: single
Material: brass/SUCO*
Mounting hole: ML 10

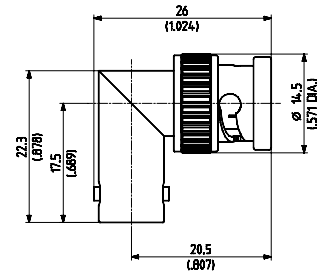


VSWR: DC - 4 GHz
≤ 1.06 + 0.04 f

BNC 50 Ω H+S type
Item no. 53_BNC-50-0-1/133_NE
22540657

plug/jack (m/f)

Packaging: single
Material: brass/SUCO*

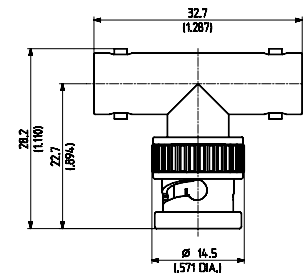


VSWR: DC - 4 GHz
≤ 1.06 + 0.04 f

BNC 50 Ω H+S type
Item no. 43_BNC-50-0-1/133_NE
22540644

2 jacks (female)
1 plug (male)
Packaging: single

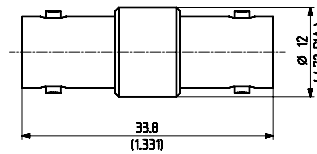
Material: brass/SUCO*



BNC 75 Ω H+S type
Item no. 31_BNC-75-0-1/133_NE
22541003

jack/jack (f)

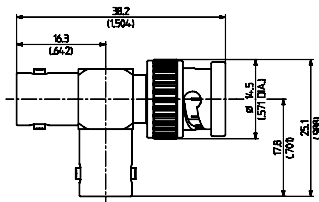
Packaging: single
Material: brass/SUCO*



BNC 50 Ω H+S type
Item no. 45_BNC-50-0-2/133_NE
22652370

2 jacks (female)
1 plug (male)
Packaging: single

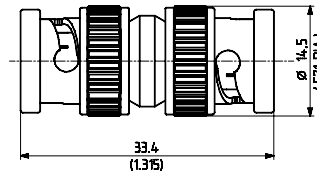
Material: brass/SUCO*



BNC 75 Ω H+S type
Item no. 32_BNC-75-0-1/133_NE
22541016

plug/plug (m)

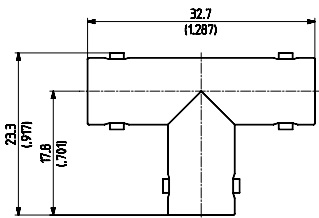
Packaging: single
Material: brass/SUCO*



BNC 50 Ω H+S type
Item no. 46_BNC-50-0-1/133_NE
22540649

3 jacks (female)

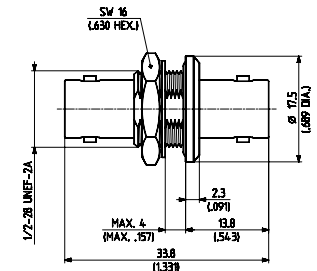
Packaging: single
Material: brass/SUCO*



BNC 75 Ω H+S type
Item no. 34_BNC-75-0-1/133_NE
22541040

jack/jack (f)

Packaging: single
Material: brass/SUCO*
Mounting hole: ML 4

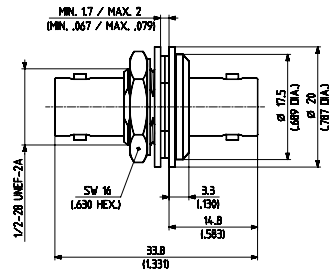


Material and plating descriptions may refer to the connector housing or outer contact.

SUCO* = SUCOPLATE®

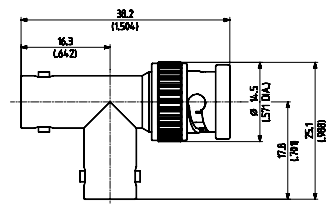
BNC 75 Ω H+S type
Item no. 34_BNC-75-0-2/133_NE
22541042

jack/jack (f) for insulated mounting
Packaging single
Material: brass/SUCO*
Mounting hole ML 22



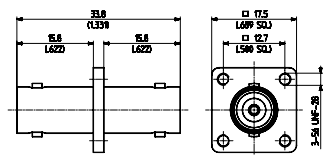
BNC 75 Ω H+S type
Item no. 45_BNC-75-0-1/133_NE
22541050

2 jacks (female)
1 plug (male)
Packaging single
Material: brass/SUCO*



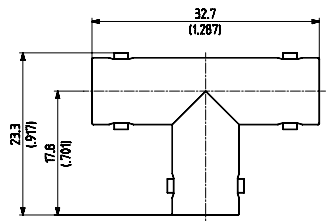
BNC 75 Ω H+S type
Item no. 37_BNC-75-0-1/133_NE
22541045

jack/jack (f) single
Packaging single
Material: brass/SUCO*
Mounting hole ML 10



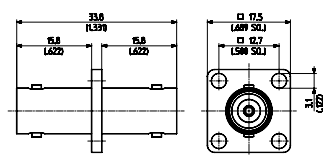
BNC 75 Ω H+S type
Item no. 46_BNC-75-0-1/133_NE
22541053

3 jacks (female)
Packaging single
Material: brass/SUCO*



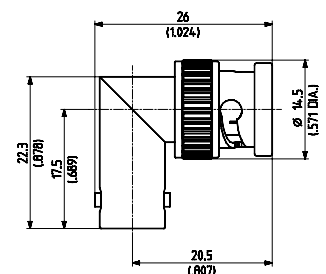
BNC 75 Ω H+S type
Item no. 37_BNC-75-0-2/133_NE
22541047

jack/jack (f) single
Packaging single
Material: brass/SUCO*
Mounting hole ML 10



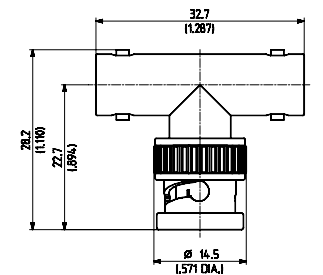
BNC 75 Ω H+S type
Item no. 53_BNC-75-0-1/133_NE
22541055

plug/jack (m/f) single
Packaging single
Material: brass/SUCO*



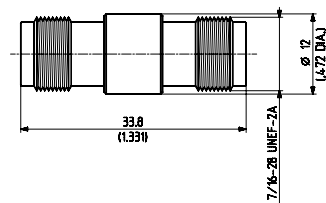
BNC 75 Ω H+S type
Item no. 43_BNC-75-0-1/133_NE
22541049

2 jacks (female)
1 plug (male)
Packaging single
Material: brass/SUCO*



TNC 50 Ω H+S type
Item no. 31_TNC-50-0-1/133_NE
22640623

jack/jack (f) single
Packaging single
Material: brass/SUCO*



VSWR DC - 11 GHz
≤ 1.06 + 0.15 f

Material and plating descriptions may refer to the connector housing or outer contact.

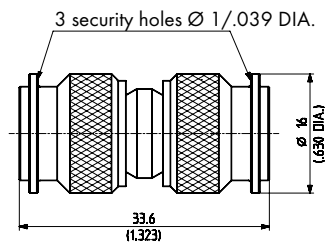
SUCO* = SUCOPLATE®

TNC 50 Ω H+S type Item no. **32_TNC-50-0-1/133_NE** 22543407

plug/plug (m)

Packaging single

Material: brass/SUCO*



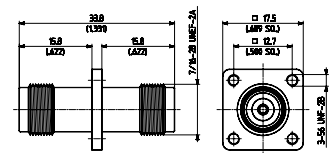
VSWR DC - 11 GHz $\leq 1.03 + 0.025 f$

TNC 50 Ω H+S type Item no. **37_TNC-50-0-1/133_NE** 22640646

jack/jack (f)

Packaging single

Material: brass/SUCO*
Mounting hole ML 8



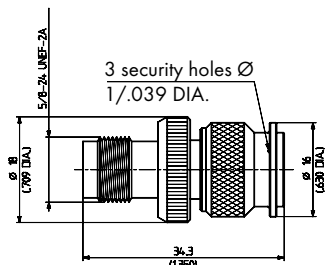
VSWR DC - 9 GHz $\leq 1.09 + 0.16 f$ 9 - 11 GHz ≤ 2.53

TNC 50 Ω H+S type Item no. **33_TNC-50-0-1/133_NE** 22543649

plug/jack(m/f)

Packaging single

Material: brass/SUCO*



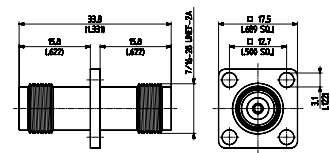
VSWR DC - 11 GHz $\leq 1.10 + 0.027 f$

TNC 50 Ω H+S type Item no. **37_TNC-50-0-2/133_NE** 22640648

jack/jack (f)

Packaging single

Material: brass/SUCO*
Mounting hole ML 8



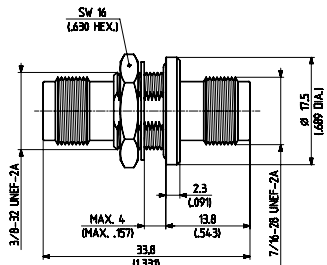
VSWR DC - 9 GHz $\leq 1.09 + 0.16 f$ 9 - 11 GHz ≤ 2.53

TNC 50 Ω H+S type Item no. **34_TNC-50-0-1/133_NE** 22640643

jack/jack (f)

Packaging single

Material: brass/SUCO*
Mounting hole ML 4



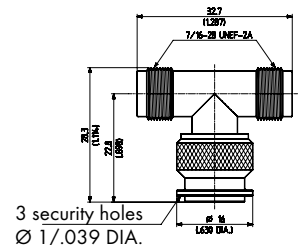
VSWR DC - 2 GHz ≤ 1.05 2 - 8 GHz ≤ 1.50 8 - 11 GHz ≤ 1.90

TNC 50 Ω H+S type Item no. **43_TNC-50-0-1/133_NE** 22640651

2 jacks (female)
1 plug (male)

Packaging single

Material: brass/SUCO*



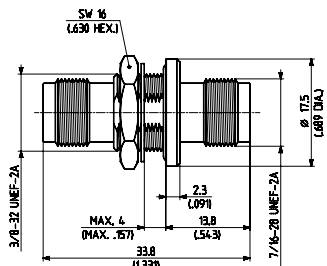
VSWR DC - 2 GHz ≤ 1.05 2 - 8 GHz ≤ 1.50 8 - 11 GHz ≤ 1.90

TNC 50 Ω H+S type Item no. **34_TNC-50-0-4/133_NE** 22658794

jack/jack (f)

Packaging single

Material: brass/SUCO*
Mounting hole ML 4



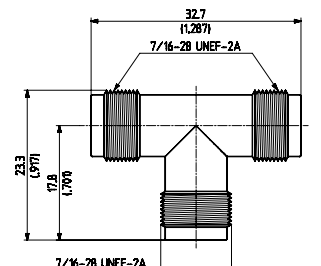
VSWR DC - 8 GHz $\leq 1.07 + 0.01 f$

TNC 50 Ω H+S type Item no. **46_TNC-50-0-1/133_NE** 22640655

3 jacks (female)

Packaging single

Material: brass/SUCO*



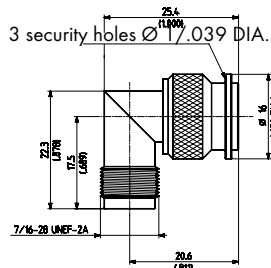
VSWR DC - 8 GHz $\leq 1.07 + 0.01 f$

Material and plating descriptions may refer to the connector housing or outer contact.

SUCO* = SUCOPLATE®

TNC 50 Ω H+S type Item no. **53_TNC-50-0-1/133_NE** 22640659

plug/jack (m/f)
 Packaging: single
 Material: brass/SUCO*

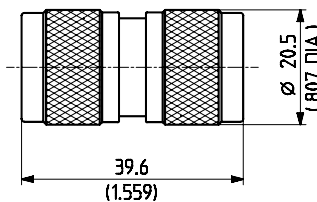


VSWR DC - 5 GHz ≤ 1.03 + 0.11 f

5 - 11 GHz ≤ 1.58

N 50 Ω H+S type Item no. **32_N-50-0-1/133_NE** 22542398

plug/plug (m)
 Packaging: single
 Material: brass/SUCO*

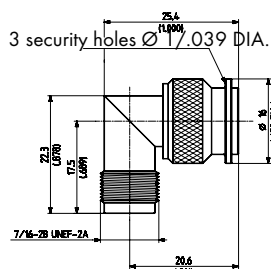


VSWR DC - 9 GHz ≤ 1.06 + 0.04 f

9 - 12 GHz ≤ 1.40

TNC 50 Ω H+S type Item no. **53_TNC-50-0-1/133_UH** 22646963

plug/jack (m/f)
 Packaging: bulk 100 pcs.
 Material: brass/SUCO*

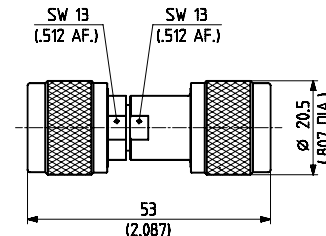


VSWR DC - 5 GHz ≤ 1.03 + 0.11 f

5 - 11 GHz ≤ 1.58

N 50 Ω H+S type Item no. **32_N-50-0-51/193_NE** 22652113

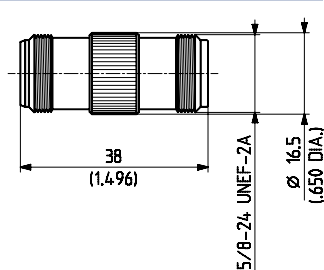
plug/plug (m)
 Packaging: single
 Material: stainless steel
 Note: Precision adapter



VSWR DC - 18 GHz ≤ 1.03 + 0.01 f

N 50 Ω H+S type Item no. **31_N-50-0-2/133_NE** 22542382

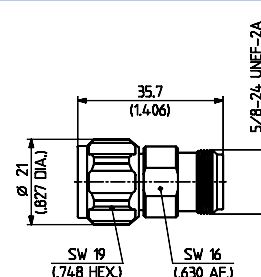
jack/jack (f)
 Packaging: single
 Material: brass/SUCO*



VSWR DC - 12.4 GHz ≤ 1.17 + 0.15 f

N 50 Ω H+S type Item no. **33_N-50-0-7/133_NE** 23014355

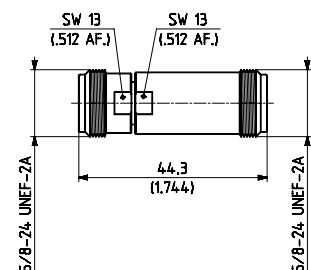
plug/jack(m/f)
 Packaging: single
 Material: brass/SUCO*



VSWR DC - 18 GHz ≤ 1.03 + 0.05 f

N 50 Ω H+S type Item no. **31_N-50-0-51/199_NE** 22652112

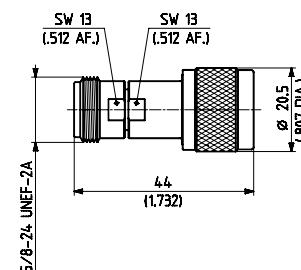
jack/jack (f)
 Packaging: single
 Material: stainless steel
 Note: Precision adapter



VSWR DC - 18 GHz ≤ 1.03 + 0.01 f

N 50 Ω H+S type Item no. **33_N-50-0-51/193_NE** 22652114

plug/jack(m/f)
 Packaging: single
 Material: stainless steel
 Note: Precision adapter



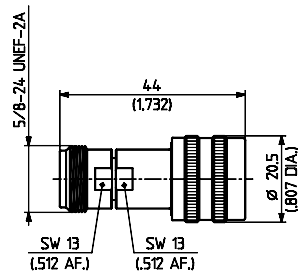
VSWR DC - 18 GHz ≤ 1.03 + 0.01 f

Material and plating descriptions may refer to the connector housing or outer contact.

SUCO* = SUCOPLATE®

N 50 Ω **H+S type** **33_N-50-0-52/199_UE**
Item no. **22648921**

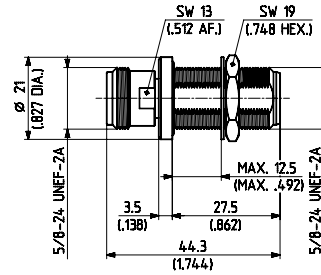
plug/jack(m/f) quick connect
 (male side)
 Packaging single
 Material: stainless steel
 Note Precision
 adapter



VSWR DC - 18 GHz
 ≤ 1.03 + 0.01 f

N 50 Ω **H+S type** **34_N-50-0-51/193_NE**
Item no. **22544593**

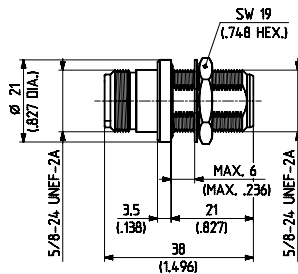
jack/jack (f)
 Packaging single
 Material: stainless steel
 Mounting hole ML 12
 Note Precision
 adapter



VSWR DC - 18 GHz
 ≤ 1.03 + 0.01 f

N 50 Ω **H+S type** **34_N-50-0-1/133_NE**
Item no. **22542435**

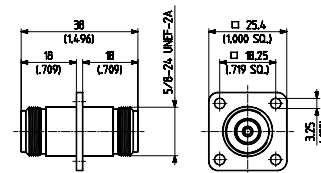
jack/jack (f)
 Packaging single
 Material: brass/SUCO*
 Mounting hole ML 12



VSWR DC - 2 GHz 2 - 12.4 GHz
 ≤ 1.06 ≤ 1.06 + 0.17 f

N 50 Ω **H+S type** **37_N-50-0-1/133_NE**
Item no. **22542437**

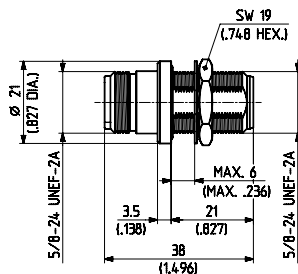
jack/jack (f)
 Packaging single
 Material: brass/SUCO*
 Mounting hole ML 14



VSWR DC - 12.4 GHz
 ≤ 1.19 + 0.06 f

N 50 Ω **H+S type** **34_N-50-0-1/133_UE**
Item no. **22651817**

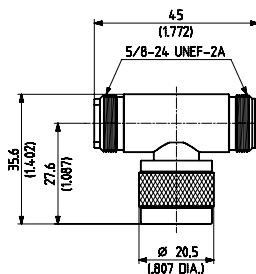
jack/jack (f)
 Packaging single
 Material: brass/SUCO*
 Mounting hole ML 12



VSWR DC - 2 GHz 2 - 12.4 GHz
 ≤ 1.06 ≤ 1.06 + 0.17 f

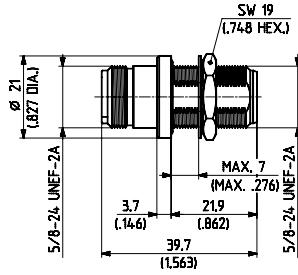
N 50 Ω **H+S type** **43_N-50-0-1/133_NE**
Item no. **22542442**

2 jacks (female)
 1 plug (male)
 Packaging single
 Material: brass/SUCO*



N 50 Ω **H+S type** **34_N-50-0-3/133_NE**
Item no. **22642946**

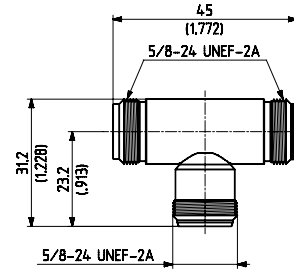
jack/jack (f) hermet.sealed
 Packaging single
 Material: brass/SUCO*
 Mounting hole ML 12
 Leak rate 10⁻⁶ Torr 1/sec.
 RoHS compli-
 ant alternative
 on request



VSWR DC - 12.4 GHz
 ≤ 1.08 + 0.13 f

N 50 Ω **H+S type** **46_N-50-0-1/133_NE**
Item no. **22542445**

3 jacks (female)
 Packaging single
 Material: brass/SUCO*



Material and plating descriptions may refer to the connector housing or outer contact.

SUCO* = SUCOPLATE®

N 50 Ω H+S type
Item no. **46_N-50-0-1/133_UE**
22658682

3 jacks (female)

Packaging single

Material: brass/SUCO*

N 75 Ω H+S type
Item no. **32_N-75-0-1/133_NE**
22542618

plug/plug (m)

Packaging single

Material: brass/SUCO*

N 50 Ω H+S type
Item no. **53_N-50-0-4/133_NE**
22651447

plug/jack (m/f)

Packaging single

Material: brass/SUCO*

N 75 Ω H+S type
Item no. **34_N-75-0-1/133_NE**
22542631

jack/jack (f)

Packaging single

Material: brass/SUCO*
Mounting hole ML 12

N 50 Ω H+S type
Item no. **53_N-50-0-4/133_UE**
22658908

plug/jack (m/f)

Packaging single

Material: brass/SUCO*

N 75 Ω H+S type
Item no. **37_N-75-0-1/133_NE**
22542633

jack/jack (f)

Packaging single

Material: brass/SUCO*
Mounting hole ML 14

N 75 Ω H+S type
Item no. **31_N-75-0-2/133_NE**
22542612

jack/jack (f)

Packaging single

Material: brass/SUCO*

N 75 Ω H+S type
Item no. **53_N-75-0-4/133_NE**
22651799

plug/jack (m/f)

Packaging single

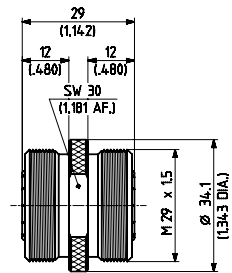
Material: brass/SUCO*

Material and plating descriptions may refer to the connector housing or outer contact.

SUCO* = SUCOPLATE®

7/16 H+S type Item no. **31_716-50-0-1/003_E** 22544117

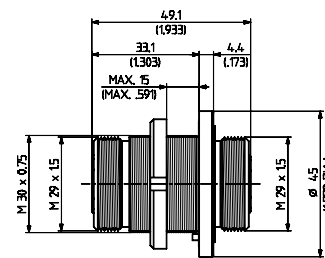
jack/jack (f)
 Packaging: single
 Material: brass/SUCO*



VSWR: DC - 3 GHz ≤ 1.03, 3 - 7.5 GHz ≤ 1.03 + 0.01 f

7/16 H+S type Item no. **34_716-50-0-2/003_E** 22652004

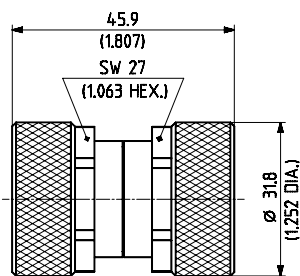
jack/jack (f)
 Packaging: single
 Material: brass/SUCO*
 Mounting hole: ML 29



VSWR: 2 GHz > 1.10, 4 GHz > 1.15, 6 GHz > 1.25, 7.5 GHz > 1.30

7/16 H+S type Item no. **32_716-50-0-1/003_E** 22544118

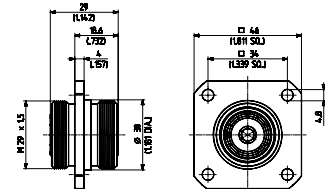
plug/plug (m)
 Packaging: single
 Material: brass/silver



VSWR: DC - 2 GHz ≤ 1.02, 2 - 4 GHz ≤ 1.03, 4 - 6 GHz ≤ 1.04

7/16 H+S type Item no. **37_716-50-0-1/003_E** 22544122

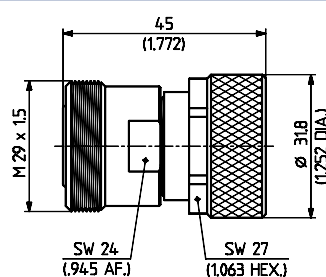
jack/jack (f)
 Packaging: single
 Material: brass/SUCO*
 Mounting hole: ML 28



VSWR: DC - 3 GHz > 1.03, 3 - 7.5 GHz > 1.03 + 0.001f

7/16 H+S type Item no. **33_716-50-0-1/003_E** 22651577

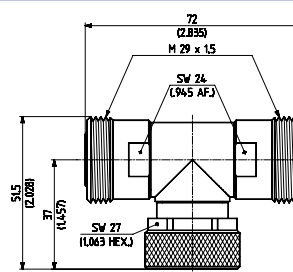
plug/jack (m/f)
 Packaging: single
 Material: brass/silver



VSWR: DC - 2 GHz ≤ 1.02, 2 - 4 GHz ≤ 1.03, 4 - 6 GHz ≤ 1.04

7/16 H+S type Item no. **43_716-50-0-1/003_NE** 22544572

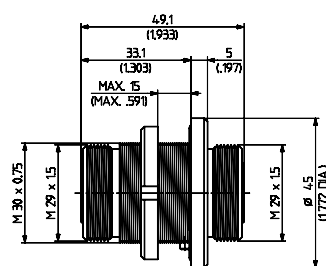
2 jacks (female)
 1 plug (male)
 Packaging: single
 Material: brass/SUCO*



VSWR: DC - 3 GHz > 1.03, 3 - 7.5 GHz > 1.03 + 0.001f

7/16 H+S type Item no. **34_716-50-0-1/003_E** 22544120

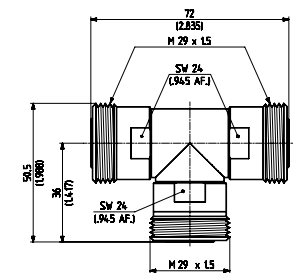
jack/jack (f)
 Packaging: single
 Material: brass/SUCO*
 Mounting hole: ML 29



VSWR: DC - 4 GHz ≤ 1.02 + 0.05 f, 4 - 7.5 GHz ≤ 1.22

7/16 H+S type Item no. **46_716-50-0-1/003_NE** 22643266

3 jacks (female)
 Packaging: single
 Material: brass/SUCO*



VSWR: DC - 3 GHz > 1.03, 3 - 7.5 GHz > 1.03 + 0.001f

Material and plating descriptions may refer to the connector housing or outer contact.

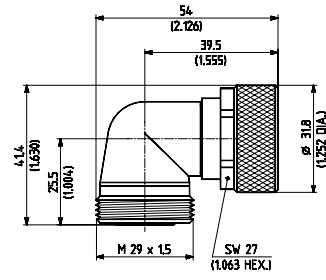
SUCO* = SUCOPLATE®

7/16 H+S type 53_716-50-0-1/003_NE
 Item no. 22641259

plug/jack (m/f)

Packaging single

Material: brass/SUCO*



VSWR DC - 7.5 GHz
 $\leq 1.02 + 0.025 f$